



Winterize Your Skin



Salon / Spa Sothys Institute Treatments

The Signature of
Excellence in
Professional Skin Care

Mystic Garden Spa & Salon



[W.] Lightening Treatment

Reveal and capture the brilliance of your skin with a multiphase facial treatment combining pure vitamin C and the exclusive [E.] Complex of white tea, chamomile, and brown algae. An antidote to pigmentation concerns or lack luster skin, complimented by absolute moments of well being. Unveil a flawless and luminous complexion.

Homecare Program

Intensive Care [W.] Double Lightening Serum
Morning and evening for 60 days

[W.] Foaming Cleansing Crème
Morning and night

[W.] Hydrating Daily Fluid
Morning and evening

[W.] Lightening Touch-up Powder
*After foundation as an alternative to translucent powder
Touch up anytime during the day*

Oxyliance Institute Treatment

Oxygen is a vital necessity of life. This invigorating treatment features several patented ingredients that stimulate cellular breathing and energize the cellular activity, leaving the skin soft, glowing and refreshed. Immediately after the first treatment, your skin will be revitalized and you'll take home the radiance.

Homecare Program

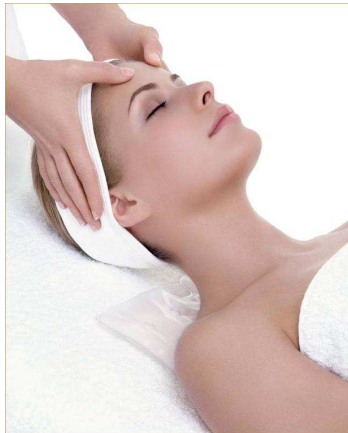
Intensive Care Oxyliance Perfect Serum
Morning and evening for 4 to 6 weeks

Oxyliance Fluid / Cream moisturizers
Morning or / and night

Oxyliance Mask
1 to 2 times a week



Winterize Your Skin



Salon / Spa Sothys Institute Treatments

The Signature of
Excellence in
Professional Skin Care

Lift Defense 2 Dermo Reconstructing Institute Treatment

This unique and deeply relaxing 5 phase facial treatment not only corrects the structural causes of aging but also relaxes the expression lines caused by repetitive contractions of the facial muscles. Wrinkles are filled, lines diminished, firmness and density of the skin is increased the facial contour is remodeled – revealing a new skin.

Anti-wrinkle Homecare Program

Intensive Care Lift Defense 2 Serum

Morning and evening for 4 to 6 weeks

Lift Defense Silky / Enriched moisturizers - *Morning*

Noctuelle - *Evening*

Lift Defense Mask

1 to 2 times a week

Firming Homecare Program

Intensive Care Lift Defense 2 Serum

Morning and evening for 4 to 6 weeks

Lift Defense Silky / Enriched moisturizers - *Morning*

Total Cohesion Satin / Protective moisturizers – *Evening*

Total Cohesion Firmness Mask

1 to 2 times a week

Hydrooptimale THI3 Treatment

A delightful and relaxing treatment that actually teaches your skin to auto-regulate its water balance and maintain its moisture reservoir. It offers a 3-dimensional intelligent program that will keep your skin soft and moist for hours.

A thirst quenching mask and sensorial silk textured serums, indulge and caress your skin. Your mind, spirit and soul are swept away with an exclusive warming, soothing and relaxing cocooning method.

Homecare Program

Intensive Care Hydrooptimale THI3 Serum

Morning and evening for 4 to 6 weeks

Hydrooptimale THI3 Light / Comfort

Morning or / and night

Hydrooptimale THI3 Mask

1 to 2 times a week

Winterize Your Skin

November through February

----- **Package Special** -----

"Pay for Three Facials Treatments Get one FREE".

Ask for details!

Call (303)774-2541

600 S. Airport Rd. - Longmont